



UNSW  
SYDNEY



UNSW  
Department of Developmental  
Disability Neuropsychiatry

## Participant Information Sheet for Interview/group talk

### Person with intellectual disability

Evaluation of the Intellectual Disability Mental Health Connect webtool

Professor Julian Trollor and Dr Janelle Weise

---

## Participant Information and Consent Form

Evaluation of the Intellectual Disability Mental Health Connect webtool

This sheet has information about research that is looking at how helpful a new website about mental health is for people with intellectual disability. This research involves an **interview or group talk**.

This website has information about how people can have good mental health and how they can get support if they have mental health concerns.

Research means finding out what people think about things and using the information to help other people.

You can ask someone you trust to help you understand this sheet.

## Who is doing the research?



My name is Julian Trollor. I am a researcher at the University of New South Wales. I am working with



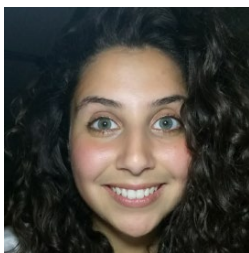
Janelle Weise

and



Claire Eagleson

and



Dominique Abagi

and



Tahli Hind

## What is it about?



We have a new website that aims to help people with intellectual disability find the support they need to have good mental health.

We want to ask people with intellectual disability what they think about the website. We will ask them using an interview or group talk.

## Who can take part in the study?



People who:

- self-identify as having an intellectual disability
- are aged 18 years old and over
- live in NSW
- have used the Intellectual Disability Mental Health Connect website at least once

## What does taking part involve?



We will ask you to contact us and answer some questions to check if you can take part in the study.

If you cannot take part, we will not keep any information about you.



If you can participate, you can choose to take part in

- **an interview or**
- **a group talk** (if available)

An interview involves answering questions by yourself or with a support person.



A group talk involves answering questions in a group.

There will be about 4 other people in the group.

If you want you can bring a support person with you.



In an interview or group talk we will ask you about:

- brief details about yourself
- support you have got for your mental health
- if the website has useful information
- if the website has helped you
- your thoughts on the website.

You can do the interview or group talk:



- via video conferencing (e.g. Zoom) or



- in person or



- on the phone



You can choose which questions to answer.

You can say no if you do not want to answer a question.



We will ask to record what you say.

If you do an **interview** and do not want us to record, that is OK. We will take notes instead.

If you take part in a **group talk**, we must record it. There is no option to take notes instead.



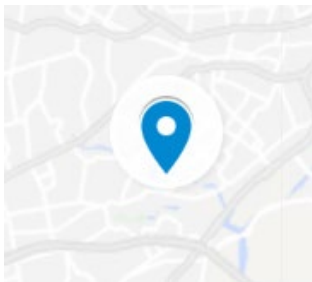
If you use communication aids we will ask if we can take a photo of them.

We will use the photos to help us write down what you said.



The **interview** will take no more than 1 hour.

The **group talk** will take no more than 2 hours.



In person interviews and group talks will generally be held at a private room at 3DN in Kensington or a place that suits you that is private.



You will get a \$50 voucher to say thank you.

## Do I have to take part?



You only have to take part if you want to.

You can say no. It is your choice. No one will be angry if you say no.

Even if you say yes, you can change your mind later and stop taking part.

## What will happen to my information?



We will store your information at 3DN, UNSW Sydney on our computers.

The computers have a password.

Only the researchers will know the password.

We will keep the recordings of your interview or group talk on these computers as well.

We will keep your information for 5 years after we write reports about it.



We will keep your information private.

We will not tell anybody your name or where you live.

No one will know it was you who took part.

We will write about what we find out. If you want, we will send you a summary.



The summary will also be on our website

**<https://www.3dn.unsw.edu.au/projects/intellectual-disability-mental-health-service-pathway-tool>**.

## Who can I get in touch with about the research?



If you have any questions, get in touch with:

Name: Claire Eagleson

Phone: 02 9065 9516

Email: **[c.eagleson@unsw.edu.au](mailto:c.eagleson@unsw.edu.au)**







If you want to complain about the research, you can get in touch with the Human Research Ethics Coordinator. It is their job to listen to you and find out what happened.

Phone: (02) 9385 6222

Email: [humanethics@unsw.edu.au](mailto:humanethics@unsw.edu.au)

Tell them this number: HC220792

Sometimes answering questions about mental health can be upsetting.

If you feel upset after taking part, you can talk to someone who supports you or call one of these numbers.



Beyond Blue: 1300 224 636

Anyone can call this number any time of the day.

They have a website too. It is **[www.beyondblue.org.au](http://www.beyondblue.org.au)**

## What if I am having a crisis?

A crisis is when you are very upset and need help straight away.



If you are in a crisis, you can call one of these numbers:

Suicide Call Back Service: **1300 659 467**

They have a website too. It is **[www.suicidecallbackservice.org.au](http://www.suicidecallbackservice.org.au)**

Lifeline: **13 11 14**

They have a website too. It is **[www.lifeline.org.au](http://www.lifeline.org.au)**

Anyone can call these numbers any time of day.



If you have a hearing impairment you can call Lifeline through the National Relay service. Here is how:

For TTY phone 133 677 then ask for 13 11 14

For Speak and Listen phone 1300 555 727 then ask for 13 11 14

## I want to take part

### Evaluation of the Intellectual Disability Mental Health Connect webtool

I am signing this form because I understand about the research, and I want to take part

My name \_\_\_\_\_

My signature: \_\_\_\_\_

Date: \_\_\_\_\_

My address: \_\_\_\_\_

\_\_\_\_\_

My email address: \_\_\_\_\_

My phone number: \_\_\_\_\_

I want to be sent the results of the study

I understand that you will only use my contact details for me to take part in the research and to tell me about the findings afterwards.

Witness signature (a witness is someone who saw you sign the form):

\_\_\_\_\_

Date: \_\_\_\_\_

## I do not want to take part anymore

### Evaluation of the Intellectual Disability Mental Health Connect webtool

I am signing this form because I changed my mind. I do not want to take part anymore and I do not want you to use what I said.

My signature: \_\_\_\_\_

Date: \_\_\_\_\_

Witness signature (a witness is someone who saw you sign the form):

\_\_\_\_\_

Date: \_\_\_\_\_

#### Send this form to:



Prof Julian Trollor  
3DN, UNSW Sydney  
Rm 241 Biolink Building E25  
Sydney, NSW, 2052



Or email it to [j.trollor@unsw.edu.au](mailto:j.trollor@unsw.edu.au)



You can also call us on the phone **02 9065 9516**

**Thank you for reading. This information sheet  
is for you to keep.**